

APPENDIX A - SOUTH WEST HERTS PLAN

- MONITORING & REVIEW -



April 2011

1) Highways Joint Member Panel Introduction

As of 2010-2011, an annual report will be produced at the end of each financial year to report progress being made on the schemes and projects contained within Urban Transport Plans. For Watford Borough, this is covered by the South West Herts Transport Plan.

This report outlines the projects which have been delivered during 2010-2011.

As detailed below further annual reports will be published for the April HJMP's:

- **April 2012:** Annual Monitoring Report for schemes delivered in 2011-2012
- **April 2013:** As 2012-2013 is the last year of the current SWHTP, (plans run for 5 years, and the current plan was adopted in November 2008) this report will take an overview of the complete plan period and also report on any schemes that were not delivered, and the reasons why.

2) Background

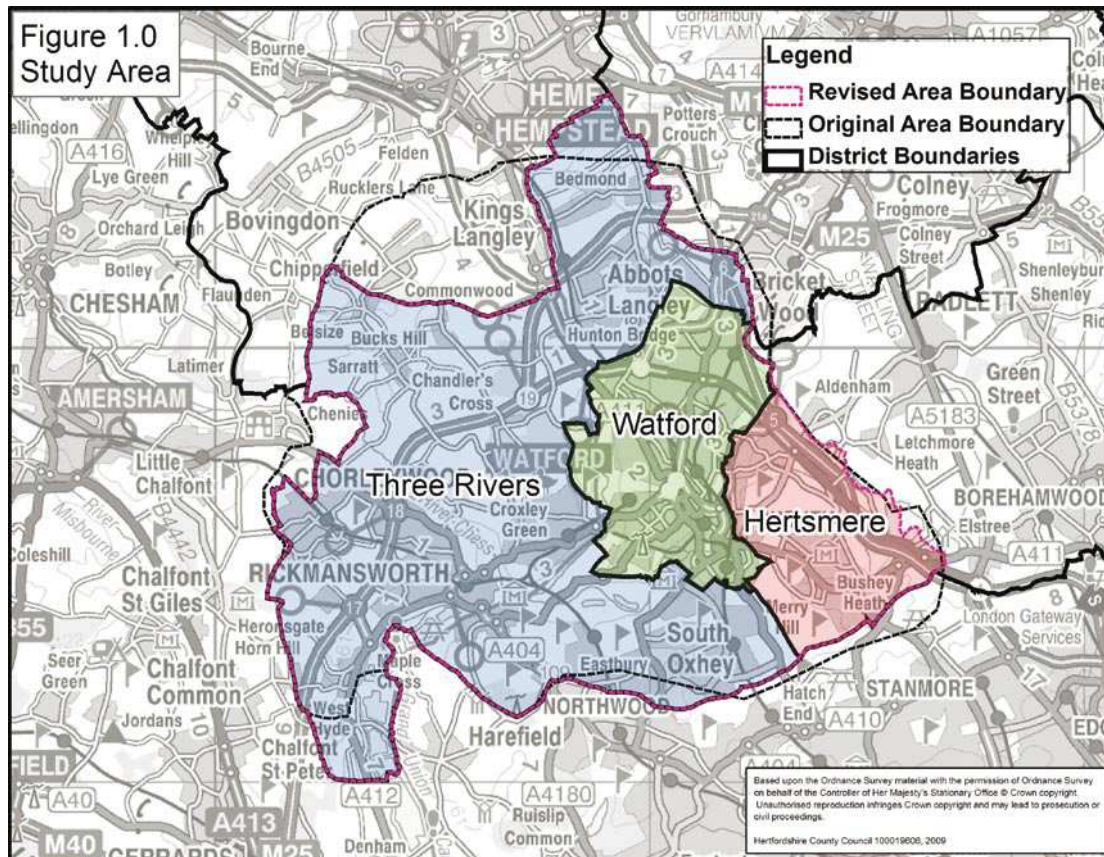
The South West Herts Plan (SWHP) was adopted in November 2008.

The SWHP was developed through a process of inter-linked stages with input from

- an **Officer Steering Group** (comprising of officers from Hertfordshire County Council, Watford Borough Council, Hertsmere Borough Council, Three Rivers District Council and the Mouchel Parkman design team),
- a **Member Steering Group** (comprising County and District Members)
- and **Stakeholder Involvement**.

The current SWHP includes an Action Plan. The review of the plan is expected in 2013/14 to incorporate the potential development proposals being identified and reviewing transport issues in the study area. Figure 1 below indicates the area that was considered as part of this process.

Figure 1 – Plan Area



2) Key Themes

The *Forward Vision* for transport in the South West Herts, within the plan states:

“A sustainable, innovative transport system, that seeks to make travel within the South West Herts area easier through the full utilisation of different transport modes and the better management of the existing network.”

This vision supports the following underlying themes:

- **Better Management of the Existing Network:** This includes making sure that the appropriate traffic is using the appropriate part of the highway network.
- **Sustainability:** Reducing the need to travel and promoting sustainable travel trips.
- **Innovation**
- **Accessibility and utilisation of all modes**

3) Significant Changes

Watford Town Centre Cultural Study:

During the period of the current SWHP, Watford Borough Council have produced the Watford Town Centre Cultural Study which was endorsed in December 2009. This study identifies culturally specific proposals to place the town at the heart of the region's cultural scene.

It focuses on two areas the "Town Hall Cluster" and the "Palace Theatre Cluster." The study makes a number of recommendations. At the time of writing works were taking place to make improvements to the subway linking The Parade and the Town Hall. Improvement works are proposed throughout the Town Centre in The Parade and High Street areas. Improvements in the "Palace Theatre Cluster" area are linked to the redevelopment of Charter Place.

The study recognises the importance of transport and movement in the study area and suggests a number of changes including relocating the bus stops in Clarendon Road by the Palace Theatre, improved crossing facilities at specific locations and streetscape improvements.

Abbey Line Tram Conversion:

A consultation took place early in 2010 considering the transfer of the Abbey Line to light rail operation. This would allow increased capacity on the line and provide a clock face timetable. Hertfordshire County Council would be responsible for the service and it would be removed from the London Midland franchise. Currently the County Council is due to receive answers to questions from the four short listed bidders who are interested in operating the service. A tender will then be issued, with the service expected to start in 2012.

Both of these projects were not included in the 2008 review as they were not known about at the time. These significant projects will have an impact on transport provision in the study area and will play important roles when the plan is reviewed in 2013 / 2014.

4) Monitoring Mechanism – 2010-2011 Delivery

A total of thirteen schemes have been delivered in 2010-2011 that support the South West Herts Transport Plan. The outcome and delivery on each of these are detailed below according to target.

Safety:

Four safety schemes were delivered within the study area during 2010-2011, all within the Borough of Watford as detailed below:

- A4008 Stephenson Way
- A411 Beechen Grove
- A405 Dome Roundabout Signals
- Town Hall Roundabout

The before data is shown in appendix B.

Accessibility:

a) Provision of new crossings

Two signalised crossings were delivered, one in Kings Langley and one in Leavesden:

- College Road, Leavesden
- Outside Kings Langley Railway Station (as part of the Ovaltine scheme)

b) Other crossing improvements

The following improvements were also completed as part of the Ovaltine scheme:

- New footway in railway bridge by Hyde Lane including installation of traffic lights to facilitate single flow under the bridge.
- Installation of a new traffic island and bus stop improvement works in Railway Terrace near Lakeview.
- New pedestrian refuge island on Home Park Mill Link Road.

All of the Accessibility schemes listed in the South West Herts Transport Plan (2008) have now been implemented.

Cycling

Three cycle schemes were delivered, two in Watford Borough and one in the Three Rivers district.

- Watford Town Hall Cycle Link (completion of 2nd and final phase)
- Cowarch Cycle Link (Prestwick Road – Delta Gain on bridleway)
- Oxhey Park Bridge.

Oxhey Park Bridge was delivered by Watford Borough Council, and although not listed in the SWHP Action Plan it helps support the Forward Vision of the plan and increase provision for cyclists in the plan area.

All of the cycling schemes listed in the South West Herts Transport Plan (2008) have now been implemented.

When the SWHP is reviewed in 2013-2014, it will build on the work undertaken in the South West Herts Cycling Review. This will be out to member and public consultation during Spring / early Summer 2011.

Passenger Transport

No Passenger Transport schemes supporting the SWH Transport Plan were delivered during 2010-2011. The National Stations Improvements Project for Watford Junction is due to start on site during 2011-2012, starting in November 2011.

Congestion

There were two schemes delivered in 2010-2011, one in Watford, and one in Three Rivers as outlined below:

- Travelsmart Croxley Green

The project provided personalised travel planning for residents (a smaller version of the project that took place in Watford two years ago). The final results from the project are due early in 2011-2012.

- Extension of Variable Message Signing in Watford Town Centre and other strategic sites

This is one strand of the Intelligent Transport Strategy, with further strands to be delivered in 2011-2012 and beyond. Includes installation of 13 new signs of which 4 are specific to car park capacity information.

Mode share to School

One 'Safer Routes to School' scheme was delivered in 2010-2011 in Three Rivers:

- Croxley Green Safe Routes to School small works pilot

The school was ranked 119th in the Safer Routes to School ranking list in 2009. Whilst the improvements to improve pedestrian access are small scale, these should help to encourage further sustainable journeys to school. When an after survey is carried out in 2011/12 an improvement on the 64% of children that currently walk to school will be sought.

Quality of Life

One scheme was delivered in 2010-2011 in the Borough of Watford, as outlined below:

- Sydney Road 20mph Zone.

Provision of traffic calming measures will bring the speeds down in Sydney Road to that appropriate to a 20mph speed limit. The after counts will show the schemes effectiveness and will be made available early in 2011-2012.

Summary

During 2010-2011 the following number of schemes were delivered:

- Accessibility Schemes – 2 (counting Ovaltine as 1 scheme)
- Quality of Life Schemes – 1
- Mode Share to School Schemes – 1
- Cycling Schemes – 3
- Congestion Schemes – 2
- Safety Schemes - 4

After the 2010-2011 schemes are taken into account all of the accessibility, cycling and mode share to school schemes outlined in the plan had been delivered.

The Intelligent Transport Strategy was completed and implementation has started with the installation of new Variable Message Signing (VMS) in Watford.

Date of Next Plan Review

It is proposed that that the South West Herts Plan will be reviewed from April 2013. This review will incorporate the proposed development plans for the area and the impact of these developments on the transport network. It will also consider the schemes which were not progressed and validate whether these are still relevant for consideration in the future.